

LM Tag™

Light and motion sensor



siffron.
always on

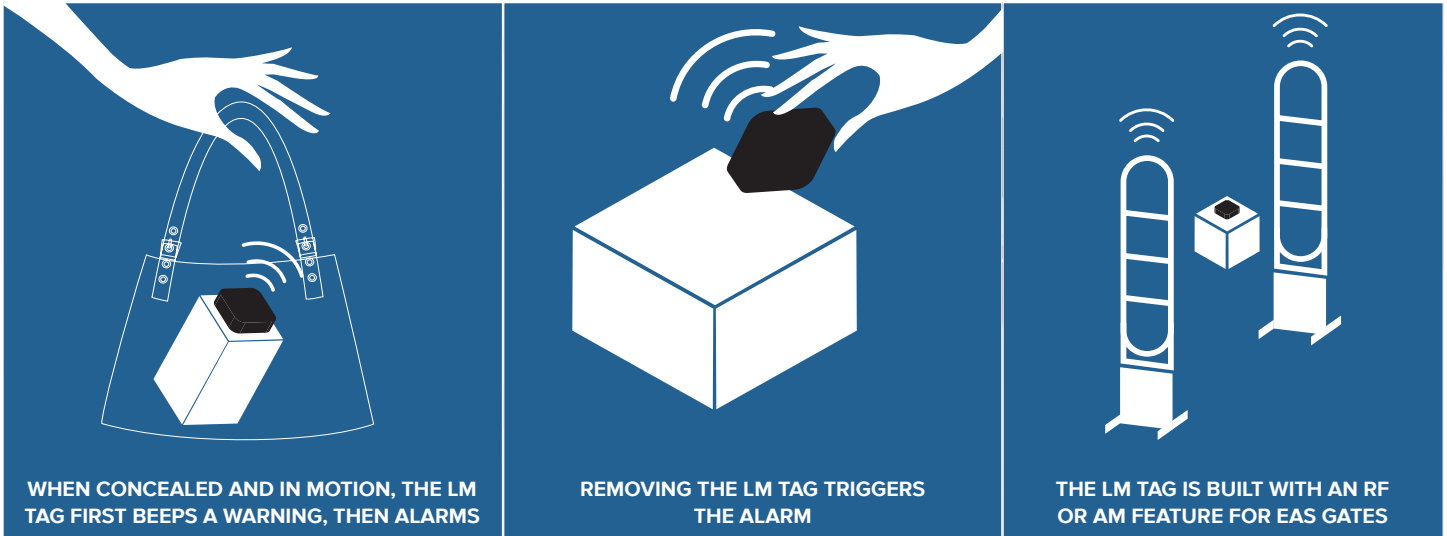


SECURITY

LM Tags™

Light and motion sensor

These are all places a would-be thief conceals product. By the time the thief walks out the door, it's too late.



How it works

The LM Tag™ alarms at the point of concealment, preventing theft before it occurs.

The LM Tag™ attaches to merchandise using a replaceable adhesive backing. LM Tag™ can be adjusted to be visible at first glance on shelf or hidden behind package. If product is tampered, concealed, or removed from store, the alarm will alert staff and help prevent loss.

The LM Tag™ product line features a multitude of loss prevention solutions to prevent

theft in stores, including LM Tag™ Slim, LM Tag™ 3-Alarm and LM Tag™ with SONR™. Other accessories include the LM Tag™ Wrap and LM Tag™ Clip.



LM Tag™ can now interface with SONR™ Echo Box to relay up to 20' and alerts store associates away from the retail area.



How it works

The LM Tag™ uses the combination of a light sensor and motion detector to notify when the product is both in motion and concealed. It alarms at the point of theft, making it the only device on the market that has the ability to alert you before product walks out the door.

The LM Tag's adaptability and size are key to its design, making it appropriate for adding low profile security to a wide variety of products and packaging types.

- ◆ Small size doesn't detract from product branding and adhesive back holds firmly to product without damaging packaging
- ◆ For enhanced security, the LM Tag™ can be combined with existing anti-theft devices such as anti-sweep merchandisers or security hooks. Suitable for a large variety of boxed, blister-packed, and pegged items
- ◆ The LM Tag™ is designed to be applied anywhere on the product, allowing you to best merchandise products and maximize retail space
- ◆ With the LM Tag™, items are not locked up or stored behind a desk, allowing customers to interact with the product and eliminating the need for additional staff assistance.

Prevent
theft!

100%

Of surveyed offenders
said they were,

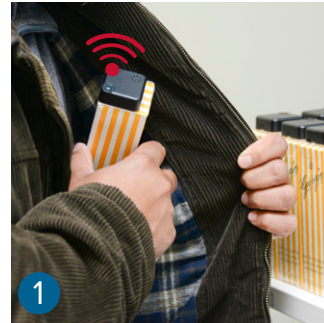
“highly unlikely”

to steal a product
protected by LM Tag™.

Design Features

LM Tag™ Product Family

Product	Benefit
LM Tag™	Light and motion sensor
LM Tag™ Slim	40% slimmer
LM Tag™ Wrap	Secure LM Tag™ to packages
LM Tag™ Clip	Secure LM Tag™ to oddly shaped merchandise
LM Tag™ Corner Adapter	Secure LM Tag™ to packaging
LM Tag™ with SONR	Integrate with SONR™ Echo Box
LM Tag™ 3-Alarm	added EAS gate protection



Full selection of Loss Prevention Solutions

- 1 LM Tag™**
Uses the combination of a light sensor and motion detector.
- 2 LM Tag™ with SONR™**
LM Tags are now available with SONR™ capabilities.
- 3 LM Tag™ 3-Alarm**
The 3-alarm LM Tag features an EAS Gate sensor.
- 4 LM Tag™ and Wrap**
Secure packages and other boxed items using the LM Tag™ and Wrap combo.

BOGO
SECOND PAIR IS
1/2 PRICE



FLEXIBILITY

DM's



Light, motion and EAS gate sensor

The 3-alarm LM Tag features an EAS Gate sensor that will activate the LM Tag alarm when crossing EAS security gates to further prevent shrink by alerting security personnel to store exits.

- ◆ Light, motion and EAS gate sensor
- ◆ Low profile
- ◆ Does not detract from branding
- ◆ 1st Alarm - Light and motion sensors trigger if product is concealed and activates if LM Tag is removed from product.
- ◆ 2nd Alarm - EAS gate alarms when LM Tag passes through.
- ◆ 3rd Alarm - LM Tag alarm triggers when passing through EAS gates at store exit points.

LM Tag™ with SONR



LM Tag™ with SONR™ advantages

LM Tags™ are now available with SONR™ capabilities, providing an extra level of protection against theft with remote notification. LM Tags™ interface with the SONR™ Echo Box (installed remotely) to relay product activity notifications to the Echo Box - increasing awareness and response times!

The SONR™ notification can provide additional alerts to store staff or trigger existing store systems like video surveillance or communication devices.

- ◆ Light and Motion sensor
- ◆ Small and Lightweight
- ◆ Effectively deters theft at the point of concealment
- ◆ Notifies store personnel on and off the floor of suspicious activity
- ◆ Alarm activation with:
 - Tag removal from package
 - Concealment time threshold met





Secure and protect packaged merchandise

Secure packages and other boxed items using the LM Tag™ and Wrap combo. One method shoplifters use to steal pricier goods is to open and remove them from the package. With the LM Tag™ and wrap, packages remain closed and secure. Any tampering with the monofilament are in addition to alarming if package is hidden or concealed results in alarm.

The LM Tag works with Monofilament Security Wire, making it appropriate to wrap around a wide variety of products and packaging shapes and lengths. Wire provides a clear and unobtrusive security without interference to visual merchandising and packaging.

- ◆ Monofilament is cut
- ◆ Entire device is removed from the package
- ◆ Prolonged concealment and movement
- ◆ LM Tag™ is removed from the Tag mount
- ◆ RF and AM features for EAS gates



LM Tag™ Clip



Protect merchandise of any shape

The LM Tag Clip is a form fitting alarm holder adaptable for LM Tags™ and is a key accessory in making it appropriate for a wide variety of products and packaging types to be secured. The clip allows the LM Tag to be placed on a variety of products such as shoes, boots, purses, apparel, and more.

The LM Tag offers a combination of a light sensor and motion detector to notify when the product is both in motion and concealed. It alarms at the point of theft, making it the only device on the market that has the ability to alert you before product walks out the door.

- ◆ Accessory clip for the standard 1.5" x 1.5" LM Tag
- ◆ Alarms at removal from product
- ◆ Quick application clip for easy installation
- ◆ No additional detaching equipment necessary
- ◆ Reusable and robust design
- ◆ Can be used with additional sign clip for promotional materials
- ◆ LM Strobe Key and Strobe Base disarms the tag



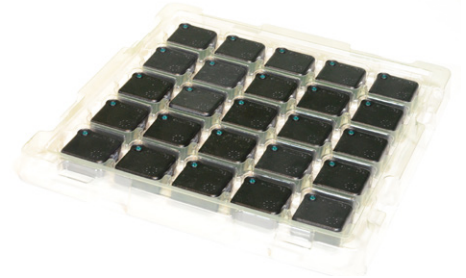
Accessories



Corner Adapter



Adhesive Pads



Storage Trays



Monofilament



Echo Box



Adhesive Backing

Handheld Deactivator

- ◆ Light, easy to carry
- ◆ Compatible with SONIQ™ Alarm Hook product line



Countertop Deactivator

- ◆ Attaches with adhesive or hardware
- ◆ Can be mounted on top or side of counter





8181 Darrow Road
Twinsburg, OH 44087

LM Tag™

Reduce Theft

Light motion sensor prevents theft in stores.

Increase Sales

Keep merchandise accessible and shopable to customers.

Reduce labor costs

Easy to set up and reuse, reducing labor costs.

2022.1019

Ordering is easy!

Phone **1.800.422.2547**
Fax **815.877.7454**
Web **www.siffron.com**

call toll free in North America
fax us your purchase order
buy and find resources online

